

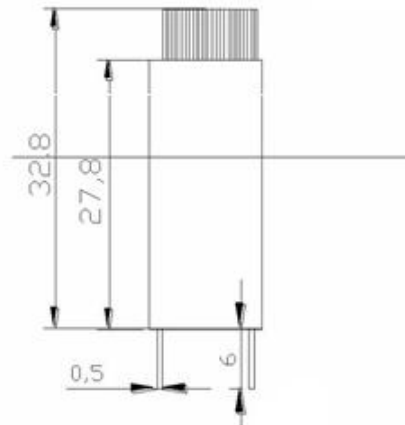
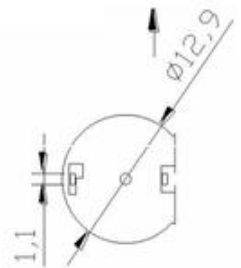
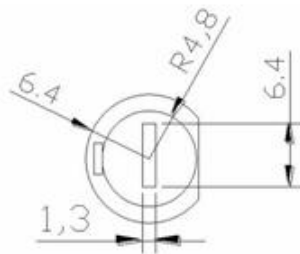
**Shocksafe Cylindrical Vertical 5x20mm PCB Fuse Holder
PTF-45 10 Amps 250 Volt With Screw Cap 10 mm Pin
Spacing**

Description

Ao littel PCB Fuse Holder PTF-45 with screw cap was designed for 5x20mm both glass fuse and ceramic tube fuse. Shape in Cylindrical ,Mounting method is vertical mount on a printed circuit board, 32.8mm high,10mm Pin to Pin Spacing,10Amp, 250 Volt .



Dimension
Unit : mm



Specification

Name	PCB Fuse Holder
P/N	PTF-45
Color	Black
Rated Current	10Amp
Rated Voltage	250V AC
Mount	Tubular Vertical
Operating Tem Range	-30° - +85°C
Pin to Pin Spacing	10 mm (0.394")
Rated Power Acceptance	2.5W
Admissible ambient air temperature	Thermoplastic UL 94 V0
VDE Standard	UL4248-1 +C22.2 no.4248-1
UL/CUL Standard	UL4248-1 +C22.2 no.4248-1
Suitable Fuse	Glass / Ceramic Tube Fuse 5x20mm .(Ao littel BTC/STC series)
Contact Resistance	<5 mOhm
Shocksafe Category	PC2
Degree Of Protection	IP20
Housing	PBT - UL 94 V0
Shape	Cylindrical

Characteristics of fuses according to use conditions may change.